

# THE ARCHITECTURAL REVIEW

UK £5.95 USA/CAN \$11.95 JANUARY 2001



## ECOLOGICAL IMPERATIVES

Stefan Behnisch Stanton Williams Thomas Herzog Peter Hübner H2O



**FAMILY HOUSE, COSENZA, ITALY**

ARCHITECT  
**MICHELE PANZA**

- 1 Overlooking olive groves, the house is a prominent boat-like prow in the landscape.
- 2 Angular geometry dominates the composition.

Michele Panza's house built for a family near Cosenza in Calabria, the southern toe of Italy, is carefully placed just below the crest of a hill, over a sea of olive trees. Panza could not resist making the house have boat-like characteristics, and its prow cuts the sky and the green waves below with rather alarming sharpness. He admits that the strange result was generated by 'passion', and that the tilts are made as a symbol of 'the contemporary deconstructivist architecture'. This part, like the base of the composition, is finished in ochre, while the 'rationalist' element, the white main body of the house is a calm rectilinear block, slightly twisted on its podium to obtain the best views downhill north-east over the wonderful landscape.

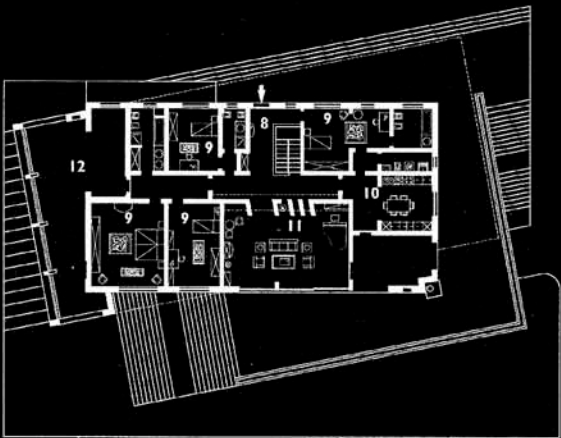
The base and rationalist superstructure are united at the east end by a most generous verandah curious in plan, which outside forms the prow of the ark on its hillside. In the base, which is partly cut into the hill, are services rooms, the garage, and a winter farmhouse living area. Externally, this plinth is carved into a two massive flights of stairs which gently connect the upper (rational) level with irrational nature. To the south-west (uphill) side a generous canopy protects facade and entrance from the sun. Elements combine or fall apart according to your point of view (in literal and metaphorical senses). As Panza says, 'something tilts but never falls: no one is perfect'.

Architect  
Michele Panza, Cosenza

# HOUSE PROWED

This little house in the Italian countryside explores colour and angular geometry to make a bold rural statement.

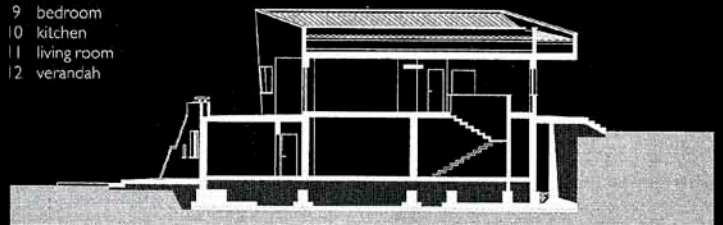
- 1 lower lobby
- 2 farmhouse room
- 3 garage
- 4 wine cellar
- 5 mechanical
- 6 laundry
- 7 storage
- 8 entrance
- 9 bedroom
- 10 kitchen
- 11 living room
- 12 verandah



ground floor plan (scale approx 1:500)



basement floor plan



cross section

